



Site Image And Address

Sample only

Aims Electrical
Ph: 09) 274 8812
Fax: 09) 274 8819
Email: aims.electrical@xtra.co.nz



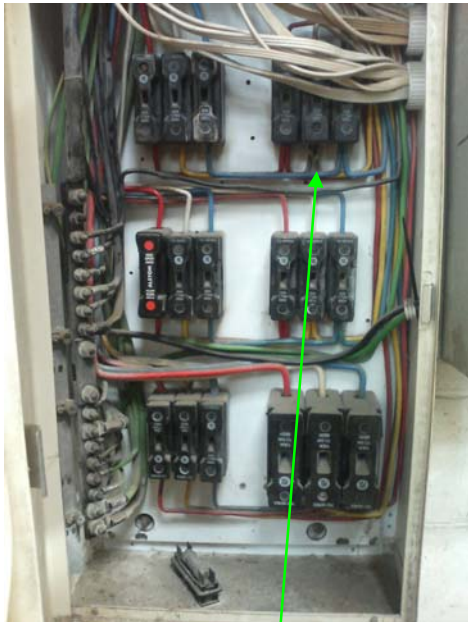
Summary of inspection for:

SAMPLE ONLY

Location	Equipment	Priority/Pass	Page
Warehouse/offices	Main Switchboard	Pass	-
Warehouse/offices	DB 1A	Pass	-
Warehouse/offices	DB 1B	Pass	-
Warehouse/offices	DB 1C	Pass	-
Warehouse/offices	DB 2A	Pass	-
Warehouse/offices	DB 2B	Pass	-
Factory	DB 3	D	3
Factory	DB 3A	C	4
Factory	DB 3B	Pass	-
Factory	DB 4	Pass	-
Factory	DB 5	Pass	-
Factory	DB 6	Pass	-
Factory	DB 7	B	5
Factory	DB 8	B	6
Factory	DB 9	Pass	-
Warehouse/offices	DB 10	A	7
Warehouse/offices	Printer	Pass	-

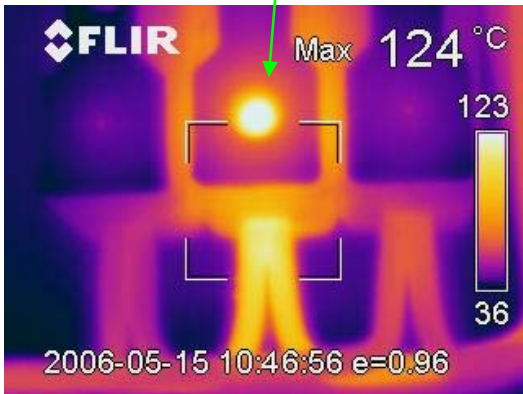
Priority levels key:

Class	Rise	Remarks
A	0 – 10	Corrective measures should be taken at the next maintenance period.
B	10 – 20	Corrective measures required as scheduling permits.
C	20 – 40	Corrective measures required ASAP, depending upon the class of load carried and the severity of temperature rise in this range.
D	40 +	Corrective measures required IMMEDIATELY.



The surveyed equipment is Distribution board 3, which is located on the wall as you enter into the Factory.

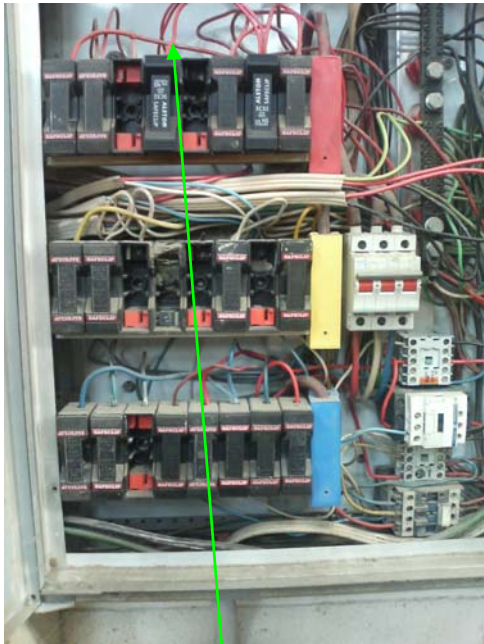
This Board was under normal load conditions when the survey was done.



IR information	Value
Emissivity	.96
IR: max	124°C
IR: min	36°C
Measured amps	32 A
Rated amps	63 A
Calculated max temp	58.2°C
Area temp	124°C
Date	26/05/2006
Priority	D

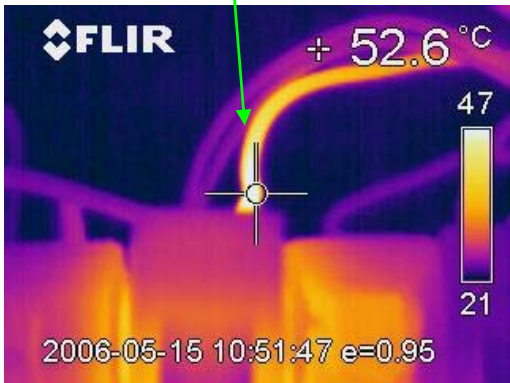
As the thermal image shows this connection into the supply side of the fuse holder appears to be loose, the measured temperature greatly exceeds the calculated maximum temperature, Corrective measures required ASAP.

Inspected equipment: DB 3A



The surveyed equipment is Distribution Board 3A, which is located on the wall as you enter into the Factory

The Board was under normal load conditions when the survey took place.



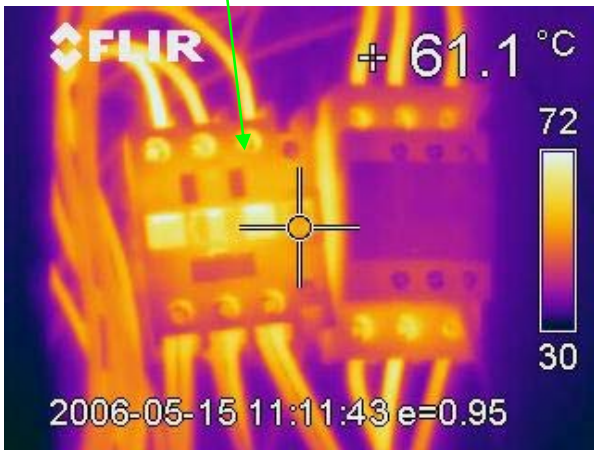
IR information	Value
Emissivity	.95
IR: max	52.6°C
IR: min	21°C
Measured amps	11 A
Rated amps	20 A
Calculated max temp	33.47°C
Spot temp	52.6°C
Date	26/05/2006
Priority	C

As the thermal image shows the wires measured temperature exceeds the calculated maximum running temperature, Corrective measures are required as scheduling permits.



The surveyed equipment is Distribution Board 7, which is located between #1 and #2 bitumen machines in the Factory.

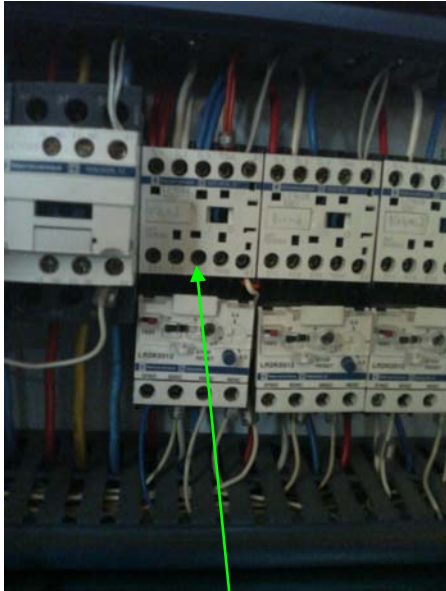
The Board was under normal load conditions when the survey took place.



IR information	Value
Emissivity	.95
IR: max	72°C
IR: min	30°C
Measured amps	27.5 A
Rated amps	32 A
Calculated max temp	44.4°C
Spot temp	61.1°C
Date	26/05/2006
Priority	B

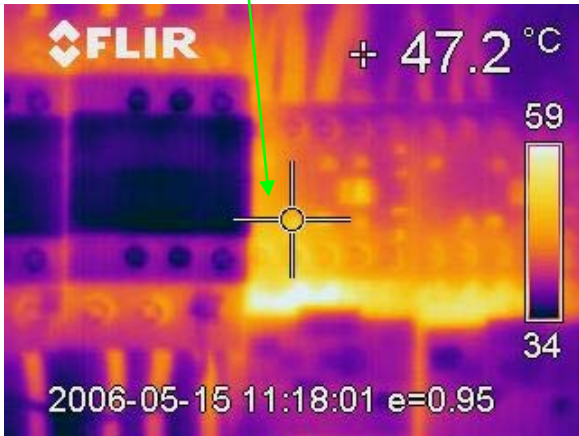
As the thermal image shows the contactor exceeds its maximum rated temperature, Corrective measures required as scheduling permits.

Inspected equipment: DB 8



The surveyed equipment is Distribution Board 8, which is located on the Eastern wall of the Factory.

The Board was under normal load conditions when the survey took place.



IR information	Value
Emissivity	.95
IR: max	59°C
IR: min	34°C
Measured amps	3.3 A
Rated amps	20 A
Calculated max temp	35.4°C
Spot temp	47.2°C
Date	26/05/2006
Priority	B

As the thermal image shows the contactor exceeds normal calculated temperature rise, Corrective measures required as scheduling permits.



The surveyed equipment is Distribution Board 10, Factory.

The Board was under normal load conditions when the survey took place.



IR information	Value
Emissivity	.95
IR: max	61°C
IR: min	28°C
Measured amps	29 A
Rated amps	32 A
Calculated max temp	49.92°C
Spot temp	54.7°C
Date	26/05/2006
Priority	A

As the thermal image shows the breakers exceed the calculated maximum temperature, Corrective measures should be taken at the next maintenance period.

This Thermographic survey was produced by:



Automation **I**nstrumentation **M**aintenance & **S**ervices

- Electrical contracting
- Electrical Inspections
- IQP Emergency lighting
- Breakdowns
- Factory maintenance
- Preventative maintenance programmes

Aims Electrical brings you this thermographic survey in accordance with the Infraspection Institute of America Guidelines.

We only record thermographic images of products with abnormalities but scan all items listed as shown on page two.

If you have any inquiries regarding this report or upcoming maintenance that we could help you with please feel free to contact us.

<p>Aims Electrical Ph: 09) 274 8812 Fax: 09) 274 8819 Email: aims.electrical@xtra.co.nz</p>
--